



www.huadacrane.com



Crane Industrial Park, Xinxiang, Henan, China



0086-373-5089978 / (+86)15603821978



solution@huadacrane.com



HUADA

MAKE THE ROAD & BRIDGE
CONNECT THE WORLD MORE CONVENIENT

Huada Heavy Industry is located in Xinxiang, Henan, province.
Dedicated to provide a full range of construction equipment with
optimized, customized & innovative solution for bridge erection, precast yard and heavy lifting project.



COMPANY PROFILE

Huada Heavy Industry

is located in Xinxiang, Henan, province. dedicated to provide a full range of construction equipment with optimized, customized & innovative solution for bridge erection, precast yard and heavy lifting project.

Huada holds the principle of customized solution, world-class reliable quality, fast delivery, and competitive price to provide whatever support we can, and, maximize to decrease the equipment purchasing cost and maintenance cost for engineering contractors. Clients are able to have the equipment at a competitive price with the higher quality, which can be comparable to European equipment.

A professional after-sale installation team, including the Mechanical engineer, electrical engineer, hydraulic engineer to help our customer finish the equipment installation, commissioning and teach to operate well at site, thereby reducing the after-sale maintenance cost of our equipment.

Since 2008, Huada Heavy Industry has been constantly working with contractors for a variety of domestic and overseas projects. Nowadays, Huada's equipment has been exported to European, Southeast Asia, Africa, Middle East and many other countries such as Philippines, Romania, Russia, Malaysia, Pakistan, Kuwait, Egypt etc.



Free Consulting Service

You are warmly welcome to asking for professional advice & solution on your project.

B

Precast Bridge Solution & Equipment

Launching gantry for high speed raily & MRT construction

Beam launcher for LRT, highway, railway

Segment lifter for cable stayed bridge by balanced cantilever method

C

Cast in Situ Solution & Equipment

Overhead movable scaffolding system overhead MSS

Underslung movable scaffolding system (underslung MSS)

Overhead form traveler

Underslung form traveler

Y

Casting Yard Solution & Equipment

Precast mould/formwork for segment girder

Precast mould for T/U/I beam

Pier formwork

H

Heavy Lifting Solution & Equipment

Rubber tyred gantry crane for girder transport at casting yard

Container straddle carrier for standard containers handling

Boat lift for boat lifting & transport at shipyard

Portal crane

Gantry crane

Jib crane

Knuckle boom crane

MAKE THE ROAD & BRIDGE CONNECT THE WORLD MORE CONVENIENT



PRODUCTION BASE

Dedication

Huada Heavy Industry not only provides clients with the widest range of specific engineering services, but also could dispatch technicians with English Languages salesman to give site assembly support and train clients staff how to make the assembly, commissioning, maintenance service.



Our Mission:

We are devoted to contributing strength for port, railway, highway, bridge construction.



Overview

Huada Heavy Industry has involved in the design and manufacturer of bridge erection equipment and gantry crane field since 2008. and specialized to provide series of customized construction solutions and equipments to the world, which covering launching gantry, beam launcher, MSS, straddle carrier, form traveller, portal crane, overhead crane and series of gantry cranes ect. Its product range widely used for LRT, MRT, Metro, Railway, Highway, Viaduct, interchange, cable stayed bridge and formwork Construction.

The factory use new and innovative solutions to assist clients in their tasks from distance -controlled equipment. to application of its technology in different fields, to environment-friendly solutions We focus on customer demand, takes technical innovation as drive. relies on quality assurance system and keeps its technology reached the international advanced level.

RUBBER TYRED GANTRY CRANE



HUADA HEAVY INDUSTRY

WhatsApp: +86 156 0382 1978

Office Phone: 0086-373-5089978

Email: solution@huadacrane.com

Address: Xinxiang, Henan, China

Web: <http://www.huadacrane.com>





Hydraulic Control System

Imported hydraulic control valve, hydraulic control system safety, stability



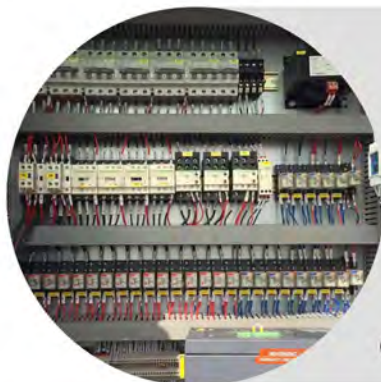
Steel Structure

Welding inspection, third party inspection, safe and stable steel structure.



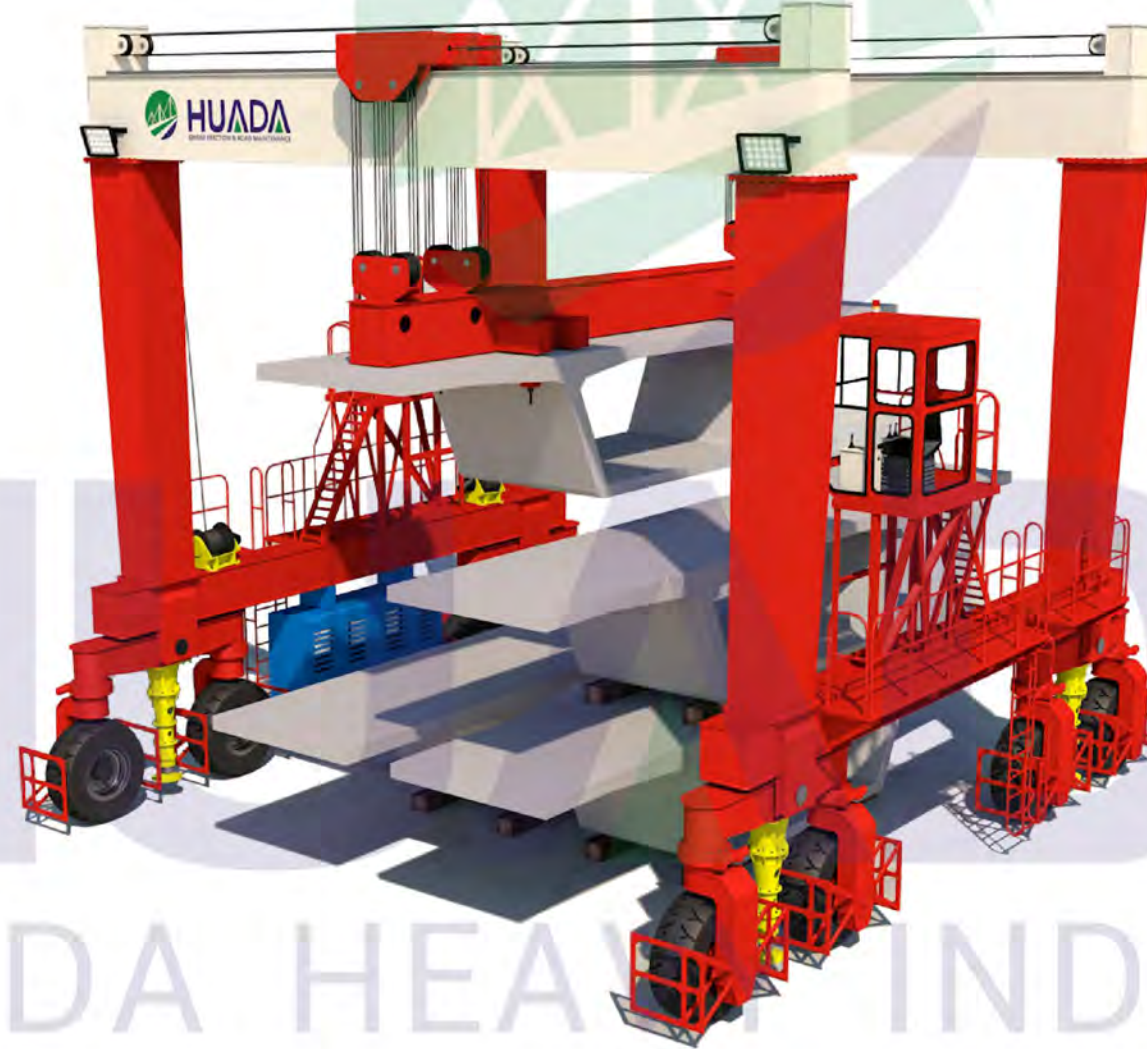
Wireless Remote Control

International brand remote control, customized products, longer service life, more user-friendly operation, more convenient



Electrical Control System

Schneider or ABB or domestic high quality brand control components, not easy to damage, easy to repair.



Generator Assembly

Integrated generator system, Cummins engine, more reliable quality



Hydraulic Components

Combination of hard and soft pipes, orderly and reasonable arrangement of hydraulic tubing; High quality hydraulic cylinder, longer service life



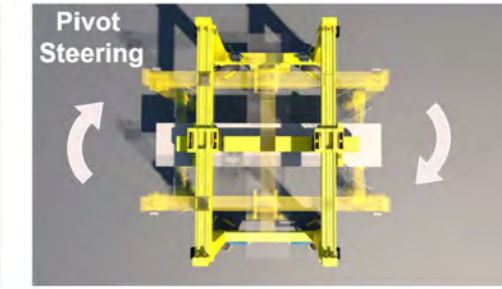
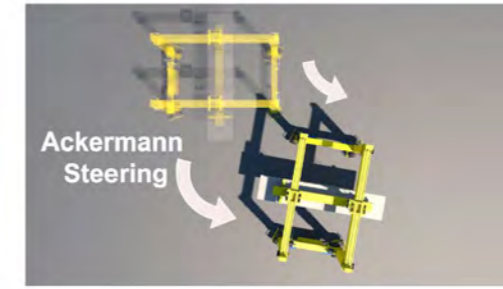
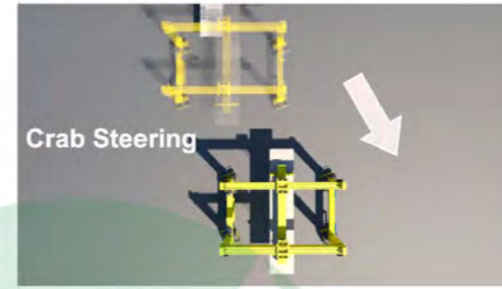
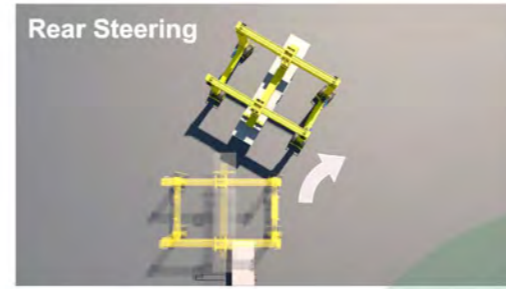
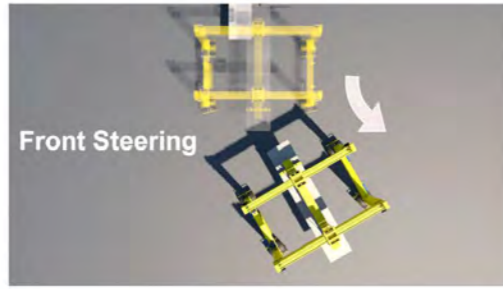
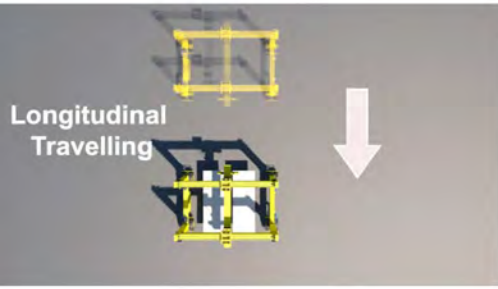
Pin Shaft Weight Sensor Device

Customized pin shaft weight sensor, real-time display of lifting weight, safety, durability, more accurate.



Tire Group

High quality customized tires, better wear resistance and longer service life.

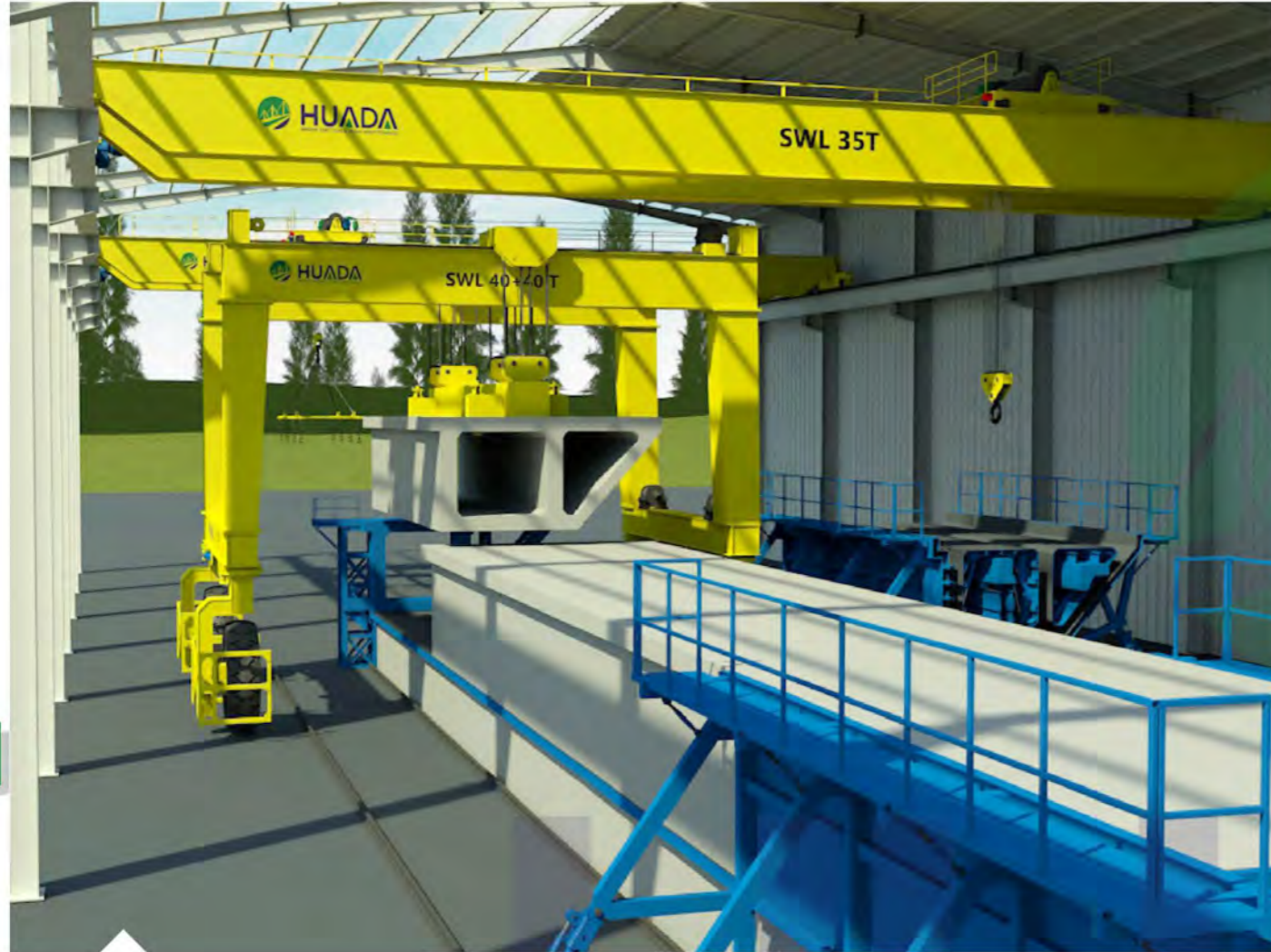


Main Application: Hoisting and Transferring of Precast T Beam, Precast U Beam, Precast Segment, Precast Segment Pipe Culvert and Other Precast Parts.

3



4



5

DOUBLE GIRDER RUBBER TYRED GANTRY CRANE

The legs adopt double girder structure, and the front and rear main girders are equipped with trolleys, with front and rear lifting points.

Usage: mainly used for lifting precast segment girder.

Double Girder U Type Rubber Tyred Gantry Crane



U Type Straddle Carriers for industrial application are designed for construction and manufacturing industry for handling oversized loads.

such as steel and pre-cast concrete and where transportation of special loads such as tanks is required in restricted spaces not suitable for trucks.

6

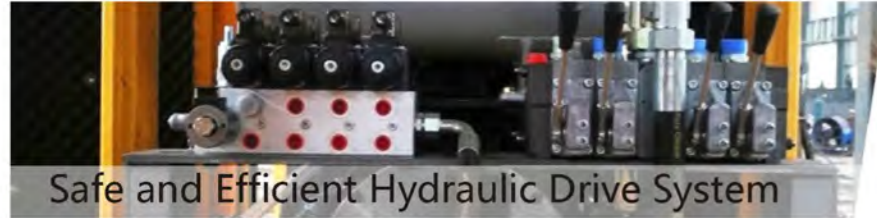
Double Girder A Type Rubber Tyred Gantry Crane



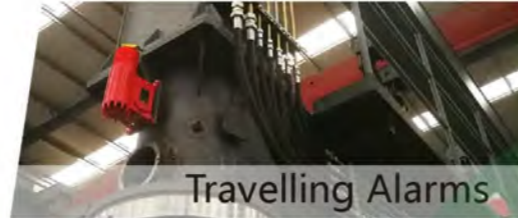
The legs adopt A type structure, the main girders are equipped with two trolleys, with left and right lifting points.

Usage: mainly used for lifting precast girder precast pipe culvert and precast tunnel

FEATURES



Safe and Efficient Hydraulic Drive System



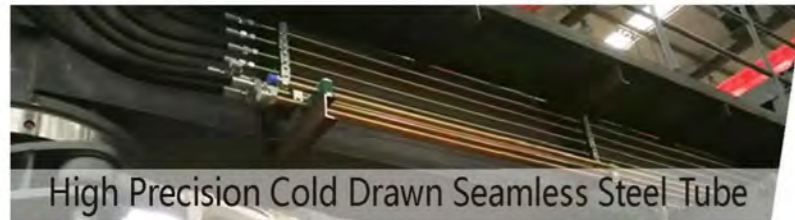
Travelling Alarms



Emergency Stop Button



Electro-hydraulic Controls



High Precision Cold Drawn Seamless Steel Tube



Headlamp with LED



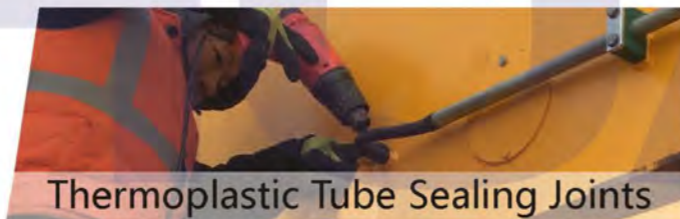
Remote Electronic load Showing



Trolley Travelling Limited Switch



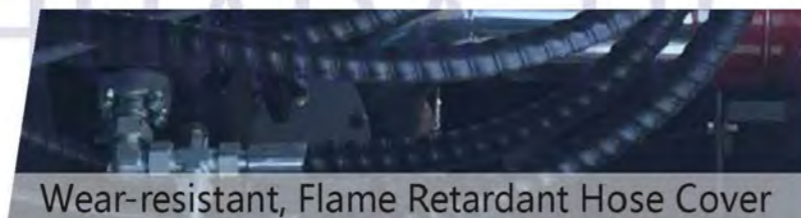
Galvanized Steel Tube for Cable



Thermoplastic Tube Sealing Joints



Wireless Remote Control



Wear-resistant, Flame Retardant Hose Cover



Steering Slew Bearing



Enclosed Cabin with Defroster & Wipers

CONFIGURATION OPTIONS

- Customized Capacity, Height, Width
- All-Wheel Electronic or Hydraulic Driving
- Electronic or Hydraulic Steering
- Increased Gradeability
- One or Two Trolleys
- Cold Start Package
- Cabin Air Conditioning and Heat
- Automatic Variable Throttle
- Hydraulic Shut-Down
- Fenders





SINGLE GIRDER RUBBER TYRED GANTRY CRANE

A Separate Use: Large span, large capacity, generally use double trolley and adopt left and right lifting points

Two Sets Combined Use: Compared with single separate use, the span is smaller, capacity is smaller, two sets work at the same time, synchronous, Two sets of single girder straddle carrier form the front and rear lifting point.

Single Girder I Type Rubber Tyred Gantry Crane



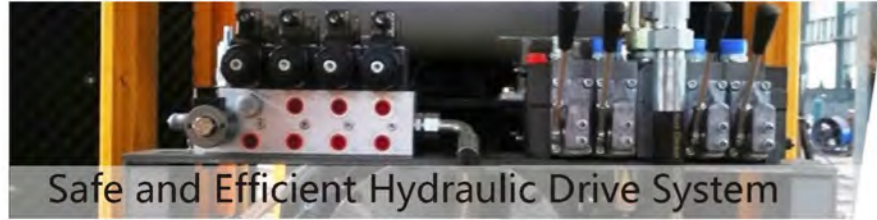
The legs adopt I type legs.

Single Girder A Type Rubber Tyred Gantry Crane

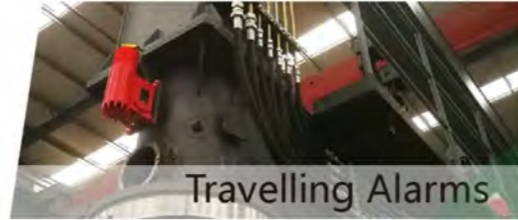


The legs adopt A type legs.

FEATURES



Safe and Efficient Hydraulic Drive System



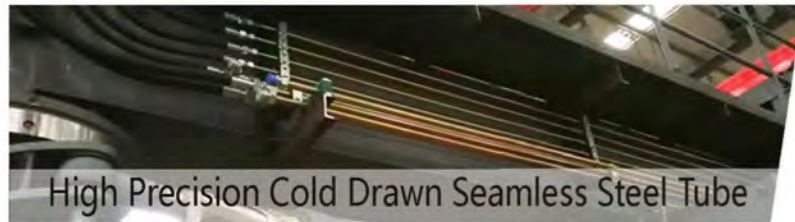
Travelling Alarms



Emergency Stop Button



Electro-hydraulic Controls



High Precision Cold Drawn Seamless Steel Tube



Headlamp with LED



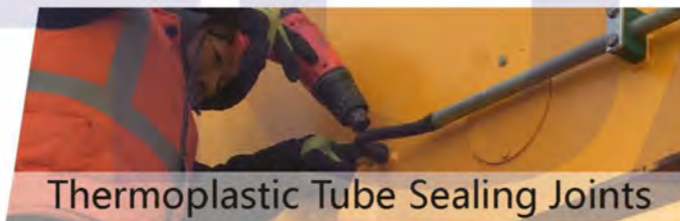
Remote Electronic load Showing



Trolley Travelling Limited Switch



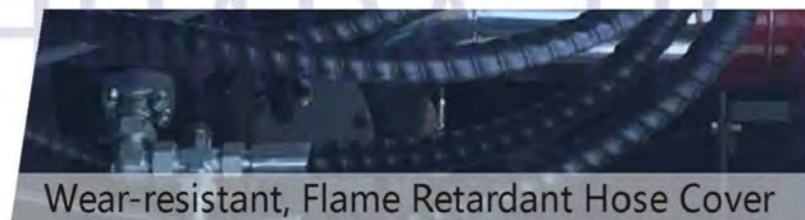
Galvanized Steel Tube for Cable



Thermoplastic Tube Sealing Joints



Wireless Remote Control



Wear-resistant, Flame Retardant Hose Cover



Steering Slew Bearing



Enclosed Cabin with Defroster & Wipers

CONFIGURATION OPTIONS

- Customized Capacity, Height, Width
- All-Wheel Electronic or Hydraulic Driving
- Electronic or Hydraulic Steering
- Increased Gradeability
- One or Two Trolleys
- Cold Start Package
- Cabin Air Conditioning and Heat
- Automatic Variable Throttle
- Hydraulic Shut-Down
- Fenders



11

12



13

CUSTOMIZED RUBBER TYRED GANTRY CRANE

We are committed to serving customers,
please tell us your requirement,
we will provide you with customized solutions.

Capacity: 100 Ton - 1000 Ton

Customized Single Girder Rubber Tyred Gantry Crane



14

Customized Rubber Tyred Gantry Crane Lifting U Beam



Customized Rubber Tyred Gantry Crane for Tunnel Construction



Customized Rubber Tyred Gantry Crane for Lifting Ballastless Track Precast Board



China HSR Construction

Thailand

120 Ton Rubber Tyred Gantry Crane
Lifting segment Box Girder

17

18



CUSTOMIZED RUBBER-TYRED GANTRY CRANE PROJECT

19



20



CUSTOMIZED RUBBER TYRED GANTRY CRANE PROJECT



21

Thailand
150 Ton Rubber Tyred Gantry Crane
Lifting segment Box Girder



22



CUSTOMIZED RUBBER TYRED GANTRY CRANE PROJECT



23

24



Australia
Industrial lifting tank

25

26

DOUBLE GIRDER RUBBER TYRED GANTRY CRANE PROJECT

CANADA

80 Ton Rubber Tyred Gantry Crane
Lifting segment Box Girder

27

28

CUSTOMIZED RUBBER TYRED GANTRY CRANE PROJECT

SINGAPORE

160 Ton Rubber Tyred Gantry Crane
lifting full span precast girder

29

30



CUSTOMIZED RUBBER TYRED GANTRY CRANE PROJECT



31

32

Romania

2 Sets 70 Ton Rubber Tyred
Gantry Crane Lifting I Girder

SINGLE GIRDER RUBBER TYRED GANTRY CRANE PROJECT



2 Sets 70 Ton Rubber Tyred Gantry Crane Installation Site

35

36

Israel

Precast yard
lifting precast box culvert

China
Rubber Tyred Gantry Crane
Lifting U Girder



China

**900 Ton Rubber Tyred Gantry Crane
Lifting Box Girder**

39

40



LAUNCHING GANTRY & BEAM LAUNCHER



HUADA HEAVY INDUSTRY

WhatsApp: +86 156 0382 1978

Office Phone: 0086-373-5089978

Email: solution@huadacrane.com

Address: Xinxiang, Henan, China

Web: <http://www.huadacrane.com>



Launching Gantry



Beam Launcher



1

SEGMENTAL LAUNCHING GANTRY

Precast Segmental Method with a Segmental Launching Gantry (LG) is a very popular way used for the construction of bridges and viaducts with small curve and long span.

Segmental Launching Gantry are used for erecting Precast Segmental Bridges and it uses Balance Cantilever Method or Span by Span Method.

Launching Gantry can be designed as Underslung or Overhead Model to meet the site requirements.

Span by Span Segmental Launching Gantry



Overhead Segmental Launching Gantry



Underslung Segmental Launching Gantry

2

Balanced Cantilever Segmental Launching Gantry





MODEL	HDJQ450	HDJQ900
Lifting capacity	450T	900T
Suitable beam	32m、24m double lines equal span and shift span box girder	32m、24m double lines equal span and shift span box girder
Suitable slope	longitudinal gradient 2% lateral gradient 4%	longitudinal gradient 2% lateral gradient 4%
Suitable curve radius	≥600m	≥600m
Lifting height	5.6m	7.8m
Max Wind pressure at work	Level 6	Level 6
Lifting trolley lifting speed	0-0.5m/min(heavy load), 0-1m/min(empty load)	0-0.5m/min(heavy load), 0-1m/min(empty load)
Lifting trolley longitudinal moving speed	0-3m/min(heavy load) 0-6m/min(empty load)	0-3m/min(heavy load) 0-6m/min(empty load)
Launching Gantry moving speed	0-3m/min	0-3m/min
Crane weight	343t	530t
Overall size	69*8.9*9m	72.5*18.9*12.6m
Installed Power	176kw	300kw
Power source	diesel generator	diesel generator
Control mode	mechanic-electric-hydraulic integration system	mechanic-electric-hydraulic integration system

FULL SPAN LAUNCHING GANTRY

Full span launching gantry is widely used in high speed rail way, high speed way, LRT and MRT projects. The bridge span typically 24m to 55m and the girder total weight between 450t to 1700t.

This Erection equipment system included FSLG Launcher (generally 900Ton), Special Trolleys (Combination Transportation and Launching Equipment), Transporters, Straddle Carriers and Rail-mounted Gantry Cranes. The equipment was used for many complex construction conditions including tunnel portal beam erection, small radius curve beam erection and cross station construction.



There are 2 types of Beam Launchers supplied by Huada Heavy Industry: the Single Box Beam Launcher and the Double Truss Beam Launcher.



Double Truss Beam Launcher



Single Box Beam Launcher

BEAM LAUNCHER

Beam Launcher is widely used for erection of precast concrete girders with almost all types of cross-sections, including I-beams, T-beams, U-beams, etc., It is designed for highway and railway.

The twin-truss type is more commonly used worldwide while the single-box type is a special design for erecting railway T-Shape Bridge Beam. The Single Box Beam Launcher is generally more efficient and lighter in weight, and is perfect for erecting pre-cast beams on tight horizontal alignments as well as for lifting beams from the sides of the bridge.

When the construction site is restricted and it is not convenient to use the lower beam feeding and tail feeding beam, can designed the side feeding girder method to build the bridge girder.



Rear Feeding Beam



Side Feeding Beam

- ▶ The Beam Launcher has many advantages, such as light weight, high stiffness, low deflection, and high wind-resistance.
- ▶ Unique steel pin connection, which is not only firm, but also easy to install.
- ▶ Flexible steel legs, convenient to disassemble and transfer.
- ▶ The frequency-converter can be installed according to the user's requirements.
- ▶ Customized Beam Launcher for bridges with span ranging from 20m to 70m.
- ▶ Beam feeding from rear end of the Beam Launcher on the deck level or from below on ground level or from bridge side.
- ▶ All Series Beam Launcher are designed to be fit into and deliver by 40 footer open top container.
- ▶ Beam Launcher comes with centralize control system, multi-speed Crane, Hydraulic powered Support, Mechanical powered Self Advancing system.





650ton 35m Launching Gantry
China
Lifting Segment Girder

Span by Span Segmental Launching Gantry



11

Balanced Cantilever Construction Method Launching Gantry Project



12



Balanced Cantilever Segmental Launching Gantry

450T High Speed Railway Launching Gantry China

Lifting Full Span Box Girder

13



14



Full Span Launching Gantry



**450T Rail Mounted Gantry Crane &
900T High Speed Railway
Launching Gantry
China**
Lifting Full Span Box Girder

HUADA HEAVY INDUSTRY

Full Span Launching Gantry



17



18



**120ton 42m Beam Launcher
Export to Malaysia**

Double Truss Beam Launcher

Beam Launcher Highway Project in China

19



20

HUADA
HEAVY INDUSTRY

Double Truss Beam Launcher

www.huadacrane.com

160T 40M Beam Launcher Used in Pakistan

21



22

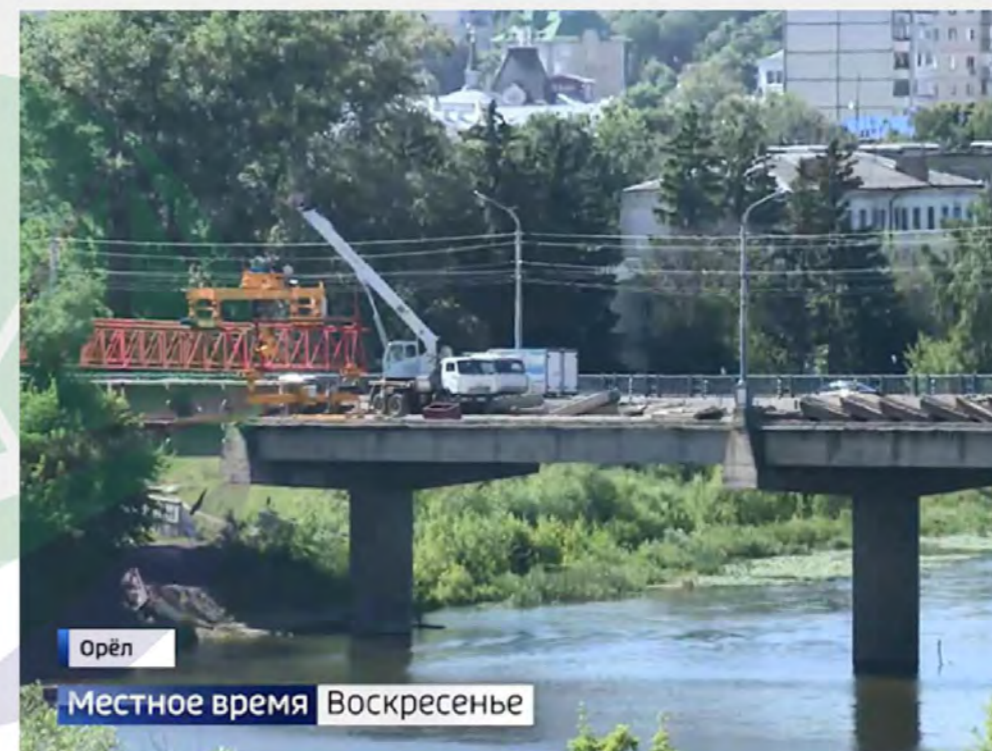
HUADA
HEAVY INDUSTRY

Double Truss Beam Launcher

www.huadacrane.com

**65ton 35m
Lifting Height 5.5m
Beam Launcher to Russia**

23



24



Double Truss Beam Launcher



25

**180T 40M
Single Box Beam Launcher
China**



26

Single Box Beam Launcher



27

180T 40M
Single Box Beam Launcher
China



28

Single Box Beam Launcher

DOLLY

HUADA HEAVY INDUSTRY

WhatsApp: +86 156 0382 197

Office Phone: 0086-373-5089978

Email: solution@huadacrane.com

Address: Xinxiang, Henan, China

Web: <http://www.huadacrane.com>



▶▶ Two axle 120T/120TJ/120TK dolly/transporter



➤ 120T/120TJ/120TK rubber-tyred dolly/transporter

Rubber-tyred dolly/transporter is the most ideal prefabricated beam transport tool in the bridge transport process. It's mainly suitable for bridge site, prefabricated beam and bridge site far from the occasion, the vehicle by two independent running structure (main and deputy vehicles) composed of transport machinery. The professionally designed center distance is widely used in the transportation of T beam, box beam and 45° angle beam, which virtually saves money for you, simplifies the transportation process and saves human and financial resources.

Main features:

1. Compact model, not limited by the narrow space of tunnels and culverts.
2. The machine has excellent performance, good stability and anti-overturning.
3. Turbocharged engine.
4. Excellent power, high efficient, powerful, energy-saving, super climbing strength.
5. Heavy-duty vehicles, safety is guaranteed.
6. Good versatility, low maintenance cost.
7. Easy to operate and maintain.

● Main technical parameters:

No.	Item	Technical index	Technical index	Technical index
1	Product type	LPLC120T	LPLC120TJ	LPLC120TK
2	Axle	4 axles	4 axles	4 axles
3	Tyre	16	16	14
4	Type (main dolly)	4108ZG	4108ZG	6108ZG
5	Rotate speed	2400	2400	2200
6	Power(main dolly/aux dolly):KW	88/7.7(120/10horse power)	88/7.7(120/10 horse power)	132/7.7(180/10 horse power)
7	Allowed load	≤120T	≤120T	≤120T
8	Gearbox type	Dongfeng 145	Dongfeng 145	Dongfeng 145
9	Speed changing grade	5 class	5 class	8 class
10	Shock mitigation system	Without	Steel Spring Plate	Steel Spring Plate
11	Travelling direction	Double	Double	Double
12	Travelling speed	3~600(m/min)	3~600(m/min)	2.5~55(km/h)
13	Main dolly/transporter size(L*W*H)	5.3x2.8x1.3(m)	5.3x2.8x1.3(m)	5.2x2.92x1.3(m)
14	Aux dolly/transporter size(L*W*H)	4x2.8x1.3(m)	4x2.8x1.3(m)	4x2.92x1.3(m)
15	Tyre type	1100-20	1100-20	1200-20
16	Brake	Air brake/air-cut brake	Air brake/air-cut brake	Air brake/air-cut brake
17	Climb ability	3%~5%(heavy load)	3%~5%(heavy load)	3%~7%
18	Steering	Hydraulic	Hydraulic	Hydraulic



Three axles 160T/180T/180TJ/180TK dolly/transporter



➤ 160T/180T/180TJ/180TK rubber-tyred dolly/transporter

● Main technical parameters:

No.	Item	Technical index	Technical index	Technical index	Technical index
1	Product type	LPLC160T	LPLC180T	LPLC180TJ	LPLC180TK
2	Axle	6 axles	6 axles	6 axles	6 axles
3	Tyre	24	24	24	22
4	Diesel engine	4108ZG/RS190H	6108ZG/RS190H	6108ZG/RS190H	WD615.69A/RS190H
5	Rotate speed	2400	2200	2200	2200
6	Power(main dolly/aux dolly):KW	88/7.7(120/10 horse power)	132/7.7(180/10 horse power)	132/7.7(180/10 horse power)	247/7.7(336/10 horse power)
7	Allowed load	≤160	≤180	≤180	≤180
8	Gearbox type	Dongfeng140	Dongfeng145	Dongfeng145	Shanqi Faster
9	Speed changing grade	5 class	5 class	5 class	8 class
10	Shock mitigation system	Without	Without	Steel Spring Plate	Steel Spring Plate
11	Travelling direction	Single or double	Single or double	Single or double	Single or double
12	Travelling speed	3~300(m/min)	3~300(m/min)	3~300(m/min)	0.03~60(km/h)
13	Main dolly/transporter size(L*W*H)	7.15x2.8x1.3(m)	7.15x2.8x1.3(m)	7.15x2.8x1.3(m)	7.5x2.92x1.3(m)
14	Aux dolly/transporter size(L*W*H)	5.5x2.8x1.3(m)	5.5x2.8x1.3(m)	5.5x2.8x1.3(m)	5.5x2.92x1.3(m)
15	Tyre type	1100-20	1200-20	1200-20	1200-20
16	Brake	Air brake/air-cut brake	Air brake/air-cut brake	Air brake/air-cut brake	Air brake/air-cut brake
17	Climb ability	3%~5%	3%~5%	3%~5%	3%~7%
18	Steering	Hydraulic	Hydraulic	Hydraulic	Hydraulic



LPLC180TZ

rubber-tyred dolly/transporter



➤ LPLC180TTZ Dolly/Transporter

● Main technical specification and configuration

No.	Item	Unit	Specification	Notes
1	Dolly/Transporter Model	/	LPLC180TZ	
2	Axle	/	6 axles	
3	Type (GB new tyre)	piece	22 pieces	
4	Diesel Engine Model	/	China National Heavy Duty Truck Group-WD615.69A or Changfa RS190H	
5	Power	kW	247/7.7(336/10 horsepower)	
6	Rotate speed (r/min)	r/min	2400	
7	Gearbox model	/	FAST 9JS180A	
8	Gear shift level	/	9 level	
9	Driving direction	/	One-way or Two way	
10	Running speed	m/min	3~900	
11	Allowable load	T	≤180T	
12	Size: LxWxH	m	7.7×2.92×1.45	Main dolly
		m	5.3×2.92×1.45	Aux dolly
13	Dolly frame	set	Customized and finished goods	
14	Axle	set	Xuzhou Meritor	
15	Main dolly tyre model	/	1300-25	Engineering tyre
	Aux dolly tyre model	/	1200R20	Steel-wire tyre
16	Brake	/	Main dolly 3 axles air-cut braking, Aux dolly 2 axles brake	
17	Allowable slope(longitudinal/transverse)	/	7% / 3%	Heavy load
18	Steering	/	Electric Hydraulic Power Steering	

Notes : 1. The walking parts of the dolly are all heavy-duty series.

2. Dolly/transporter is a non-standard product, not apply to automobile standards.

3. The above wheel base, axle base, running speed, configuration and other parameters can be customized according to client demand.



11

12

4-axle 200T/200TJ/200TK Dolly/Transporter



13

14

HUADA HEAVY INDUSTRY

200T/200TJ/200TK Dolly/Transporter

200T Dolly / Transporter is with 4 axles. The main dolly is with 4 axles and the aux dolly is with 4 axles, a total of 8 axles, 32 tyres. In order to improve the engineering safety factor, 200T dolly adopts Steyr heavy steam wheel variable deceleration, reasonable structure, stable performance. The dolly axle and frame of 200TK are casted and pressed from automobile manufacturers, with wide body, good stability, large power and fast speed.

● Main technical parameters :

No.	Item	Technical Data	Technical Data	Technical Data
1	Product Model	LPLC200T	LPLC200TJ	LPLC200TK
2	Axle	8 axles	8 axles	8 axles
3	Tyre	32 tyres	32 tyres	30 tyres
4	Diesel engine model	6108ZG/RS190H	6108ZG/RS190H	WD615.69A(YTO)
5	Rotation speed	2400	2400	2200
6	Power(main dolly, aux dolly):KW	132/7.7(180/10 horsepower)	132/7.7(180/10 horsepower)	247/7.7 (336/10 horsepower)
7	Allowable load	≤200T	≤200T	≤200T
8	Gearbox model	Dongfeng 145	Dongfeng 145	Shanxi FAST
9	Gear shift level	5 level	5 level	8 level
10	Shock Absorption	steel spring plate	steel spring plate	steel spring plate
11	Driving direction	One way or Two way	One way or Two way	One way or Two way
12	Running speed	3~600 m/min	3~600 (m/min)	0.03~60 (km/h)
13	Main dolly size: L×W×H	7.6×2.8×1.3 m	7.6×2.8×1.3 (m)	8.0×2.92×1.3(m)
14	Aux dolly size: L×W×H	6.3×2.8×1.3 m	6.3×2.8×1.3 (m)	6.3×2.92×1.3 (m)
15	Tyre model	1200-20	1200-20	1200-20
16	Brake	pneumatic brake /air-cut brake	pneumatic brake /air-cut brake	pneumatic brake /air-cut brake
17	Allowable slope(longitudinal/transverse)	3%~5%	3%~5%	3%~7%
18	Steering	Hydraulic	Hydraulic	Steering gear with hydraulic assistance

● Main Features

1. Equipped with air brake system, easy to operate, excellent performance
2. The power adopts the turbocharged engine of famous brand of Dongfeng big wheel drag, with stable technical performance and full power reserve.
3. Improved transmission and drive axle, robust and reliable system.
4. Superior performance, practical configuration, with extraordinary operating efficiency.
5. It can be equipped with a variety of optional parts to meet the requirements of different users
6. The whole dolly structure is done in one to ensure that the load balance of the axles.



LPLC 200TZ Dolly/Transporter

17



18



LPLC200TZ Transporter

Main technical parameters and configuration

No.	Item	Unit	Technical index	notes
1	Product model	/	LPLC200TZ	
2	Axis	/	8-axis	
3	Tyre	Piece	28	
4	Diesel engine manufacturer (main/aux. car)	/	Sinotruk Changfa	
5	Model(main/aux. car)	/	WD615.56/RS190H	
6	Power(main/aux. car)	KW	247/7.0(336/10Hp)	
7	Rotate speed	r/min	2400	
8	Allowable load	T	≤200	
9	Gearbox model	/	FASTRE Gear 9JS180A	
10	Gear shift level	/	9 grade	
11	Driving direction	/	One way/two way	
12	Speed	m/min	3-900	
13	Frame	set	customization	
14	Axle	set	Meritor Xuzhou	
15	Dolly dimension (L*W*H)	m	8.0 x 2.92 x 1.45	Main cra
			6.3 x 2.92 x 1.45	Aux. car
16	Main car tyre model	/	1300-25	Engineering tire
	Aux. car tyre model	/	1200R20	Wire Bead
17	Brake	/	Main car-4axle air-cut brake/aux.car 2axle brake	
18	Gradeability (transverse/longitudinal slope)	/	3%/7%	
19	Steering	/	Hydraulic/mechanic	

Notes:

1. Tyre transporter belongs to non-standard products and does not adapt to automobile standards
2. The above wheel base, axle base, driving speed, configuration and other parameters can be customized according to demand.



19

20

5 -Axle 300T/300TJ/300TK Transporter

21

22



300T/300TJ/300TK Transporter

300T girder transporter, namely the 5-axis transporter, breaks the industry only limited load of about 200T girder, with the advantages of super power, heavy load, good climbing ability, good stability and good anti-overturning, adapt to all kinds of road conditions, which is the first choice for high quality large bridge projects.

● The main features

1. New appearance, comprehensive upgrade, broad vision
2. Turbocharging engine, good power performance, large torque reserve
3. Large wheelbase, reasonable layout of the whole machine, good distribution of bridge load, good operation stability
4. Improved frame processing technology, high dimensional accuracy, better reliability
5. Superior machine performance, with extraordinary operating efficiency
6. The best choice for high performance and high efficiency users
7. According to the construction requirements, design, configuration, modification, custom-made
8. Optional configuration (additional price) diesel engine ZW6108T 260kW, widen and thicken the wheel side.

● Main technical parameters

No.	Item	Technical index	Technical index	Technical index
1	Product model	LPLC300T	LPLC300TJ	LPLC300TK
2	Axis	10-axis	10-axis	10-axis
3	Tyre	40	40	38
4	Diesel engine	WD615.69A/RS190H	WD615.69A/RS190H	YTO
5	Rotate speed	2400 r/min	2400 r/min	2400 r/min
6	Power(main/aux. car)	247kW/12kW	247kW/12kW	283kW/12kW
7	Allowable load	≤300	≤300	≤300
8	Gearbox model	FASTRE Gear 9JS180A	FASTRE 9JS180A	FASTRE 10JS200+home-made gear box
9	Gear shift level	5 grade	5 grade	8 grade
10	Shock mitigation system	/	steel spring plate	steel spring plate
11	Driving direction	One way/two way	One way/two way	Two way
12	Driving Speed	3~600m/min	3~600m/min	0.3~60 km/h
13	Main dolly dimension (L*W*H)	8.2 x 2.8 x 1.3(m)	8.2 x 2.8 x 1.3(m)	8.5 x 3.2 x 1.3(m)
14	Main dolly dimension (L*W*H)	7.5 x 2.8 x 1.3(m)	7.5 x 2.8 x 1.3(m)	7.5 x 3.2 x 1.3(m)
15	Tyre model	1200-20	1200-20	1200-20
16	Brake	Air brake/air-cut brake	Air brake/air-cut brake	Main car air-cut brake/Aux. car air brake
17	Gradeability (transverse/longitudinal slope)	3%~5%	3%~5%	3%~7%
18	Steering	Hydraulic	Hydraulic	hydraulic power assisted



Six-Axle 400T/400TJ/400TK Transporter



25

26

HU
HUADA



400T/400TJ/400TK TYRE DOLLY/TRANSPORTER

● Main technical parameters:

No.	Items	Technical index	Technical index	Technical index
1	Product type	LPLC400T	LPLC400TJ	LPLC400TK
2	Axle	12 axles	12 axles	12 axles
3	Tyre	48	48	46
4	Diesel engine	WD615.69A/RS190H	WD615.69A/RS190H	I SME385.30/RS1100H
5	Rotate speed	2200	2200	2400
6	Power (main dolly/aux dolly): kW	247kW/12kW	247kW/12kW	283kW/17kW
7	Allowed load	≤400	≤400	≤400
8	Gearbox type	Fast 9JS180A	Fast 9JS180A	Fast 10JSX200+ homemade gearbox
9	Speed changing grade	5 class	5 class	8 class
10	Shock mitigation system	Without	Steel Spring Plate	Steel Spring Plate
11	Travelling direction	Single or double	Single or double	Double
12	Travelling speed	2-600m/min	2-600m/min	0.3-55m/min
13	Main dolly/transporter size (L*W*H)	8.7×3.2×1.3m	8.7×3.2×1.3m	9.5×3.2×1.3m
14	Aux dolly/transporter size (L*W*H)	7.8×3.2×1.3m	7.8×3.2×1.3m	7.8×3.2×1.3m
15	Tyre type	1200-20	1200-20	1200-24/1300-24
16	Brake	Air brake/air-cut brake	Air brake/air-cut brake	Main dolly: Air-cut brake Aux dolly: air brake
17	Climb ability	3%-5%	3%-5%	3%-7%
18	Steering	Hydraulic	Hydraulic	Hydraulic power assisted



L PLC 120TPB DOLLY/TRANSPORTER

29



30



» LPLC120TPB PLAT DOLLY/TRANSPORTER

LPLC120TPB segments dolly/transporter is widely used in the assembly& erection construction of precast concrete segments. It has the advantages of super power, heavy load, strong climbing ability, stability and good anti-overturning ability. It is safe and reliable, stable operation, high efficiency, easy operation and convenient maintenance.

Main technical parameters:

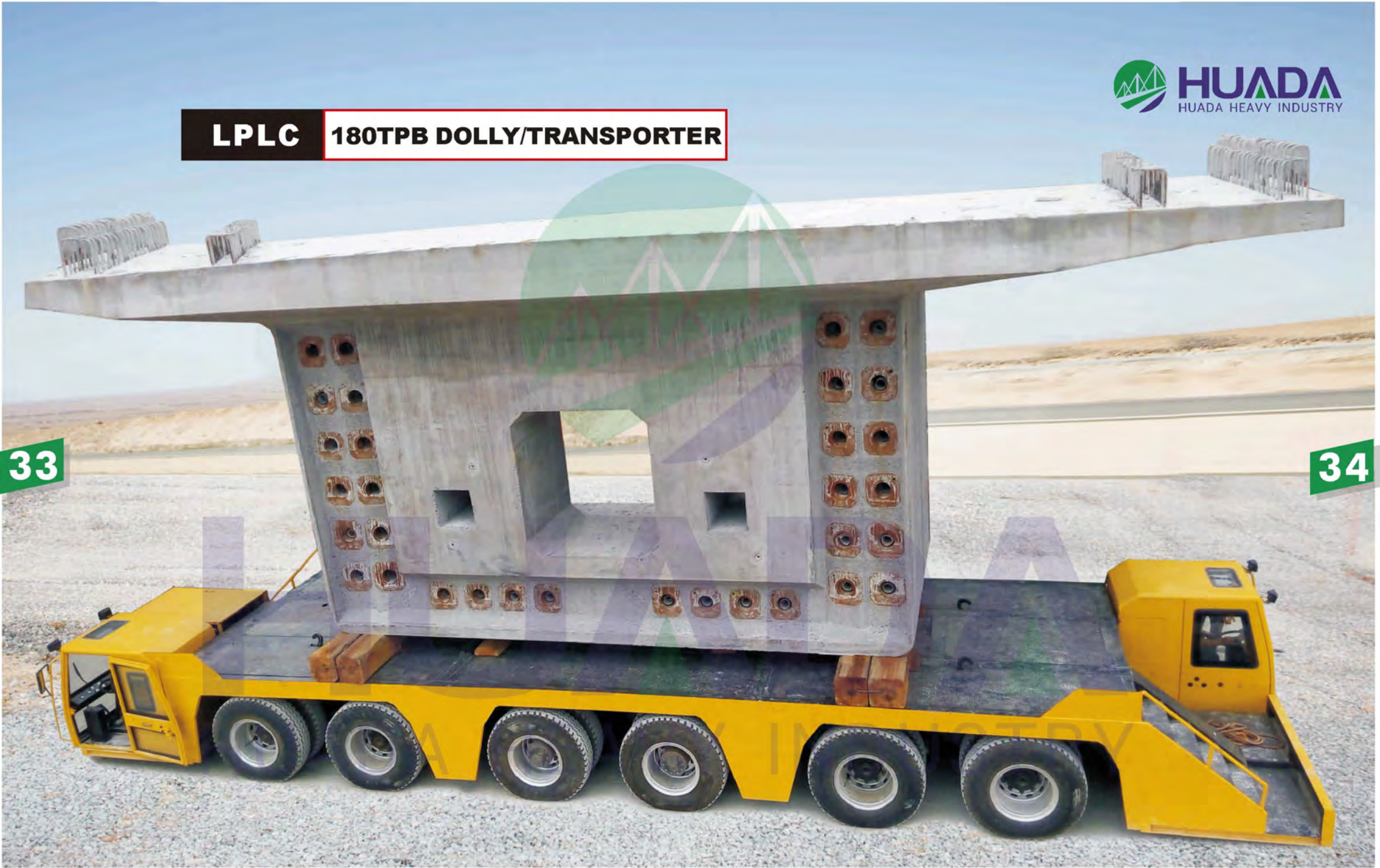
NO.	Items	Unit	Technical index (standard configuration)	Technical index (high configuration)
1	Product type	/	LPLC120TPB	LPLC120TPB-ZD
2	Axle	/	4	4
3	Tyre	pcs	16	16
4	Diesel engine manufacturer	/	Luonei	Commins
5	Type	/	6108ZG	EQB210-20
6	Rotate speed	r/min	1400	1200-1600
7	Power (main dolly/aux dolly)	kW	132 (180 horsepower)	242 (330 horsepower)
8	Allowed load	T	≤120	≤120
9	Gearbox type	/	Dongfeng145+ homemade gearbox	Hydraulic gearbox+ homemade gearbox
10	Travelling direction	/	Single or double	Single or double
11	Shock mitigation system	/	Without	Leaf spring shock absorber
12	Frame	/	Double profile	Double profile
13	Forward speed	m/min	0-202	0-210
14	Backward speed	m/min	0-300	0-310
15	Dolly/transporter size (length *width*height)	m	11.6×3.0×1.55	11.6×3.0×1.55
16	Tyre standard	/	Wire Bead	Wire Bead
17	Tyre type	/	1200R20	1200R20
18	Brake	/	Air-cut brake	Air-cut brake
19	Climb ability (Transverse slope/longitudinal slope)	/	2% (Transverse slope) 4% (longitudinal slope)	2% (Transverse slope) 4% (longitudinal slope)
20	Steering	/	Hydraulic	Hydraulic



LPLC 180TPB DOLLY/TRANSPORTER

33

34



➤ LPLC180TPB PLAT DOLLY/TRANSPORTER

LPLC180TPB segments dolly/transport is widely used in the assembly & erection construction of precast concrete segments. It has the advantages of super power, heavy load, strong climbing ability, stability and good anti-overturning ability. It is safe and reliable, stable operation, high efficiency, easy operation and convenient maintenance.

● Main technical parameters:

No.	Items	Unit	Technical index	Notes
1	Product type	/	LPLC180TPB	LPLC180TPB-ZD
2	Axle	/	6	6
3	Tyre	pcs	24	24
4	Diesel engine manufacturer	/	Luonei	Commins
5	Type	/	6108ZG	EQB210-20
6	Effluent standard		Chinese II	Chinese II
7	Rotate speed	r/min	2200	2200
8	Power (main dolly/aux dolly)	kW	132 (180 horsepower)	150 (206 horsepower)
9	Allowed load	T	≤180	≤180
10	Gearbox type	/	Dongfeng145+ homemade gearbox	Hydraulic gearbox+ homemade gearbox
11	Travelling direction	/	Single or double	Single or double
12	Shock mitigation system	/	Without	Leaf spring shock absorber
13	Frame	/	Double profile	Double profile
14	Travelling speed with load	m/min	0-202	0-202
15	Travelling speed without load	m/min	0-300	0-300
16	Dolly/transporter size (L*W*H)	m	11.6×3.0×1.55	11.6×3.0×1.55
17	Tyre standard	/	Radial Wire Bead	Radial Wire Bead
18	Tyre type	/	1200-20	1200-20
19	Brake	/	Air-cut brake	Air-cut brake
20	Climb ability (Transverse slope/longitudinal slope)	/	2% (Transverse slope) 3% (longitudinal slope)	2% (Transverse slope) 3% (longitudinal slope)
21	Minimum ground clearance	cm	30	30
22	Steering	/	Hydraulic	Hydraulic



CUSTOMIZED DOLLY/TRANSPORTER

37



38



ONE-LINE DOUBLE-AXLES DOLLY/TRANSPORTER

The one-line double-axle tyre dolly/transporter is the rear dolly/transporter connected by the Steyr locomotive as the main tractor. It has 8 tires in one axle, which has large load space and flexible operation. It is the best choice for long-distance transportation of bridge girders whose length are shorter than 25 meters.

In addition, according to the construction situation, customer can requirement to increase tonnage, design, custom, modification, configuration, and to be equipped with special girder dolly/transporter for irregular shape beams.

No.	Items	Unit	Technical index
1	Product type	/	LPLC100T
2	Axle	/	2 Axles
3	Tyre	PCS	16
4	Allowed load	T	≤100
5	Dolly/transporter size (L*W*H)	m	3×3.5×1.5
6	Tyre standard	/	Chinese standard new tyre
7	Tyre type	/	1200R20 (Wire Bead)
8	Brake	/	Air brake
9	Total weight	T	7.5



Rear dolly / transporter



41

Three axles rear dolly/transporter



Double axles rear dolly/transporter



Steyr dolly/transporter

42



Steyr dolly/transporter



Three axles rear dolly/transporter



Four axles rear dolly/transporter



Four axles rear dolly/transporter



Four axles rear dolly/transporter

43

44

Precast Mould



HUADA HEAVY INDUSTRY

WhatsApp: +86 156 0382 1978

Office Phone: 0086-373-5089978

Email: solution@huadacrane.com

Address: Xinxiang, Henan, China

Web: <http://www.huadacrane.com>



Precast Segment Mould



U Beam Formwork



Full Span Box Girder Formwork



T Beam Formwork



Box Culvert Formwork



1

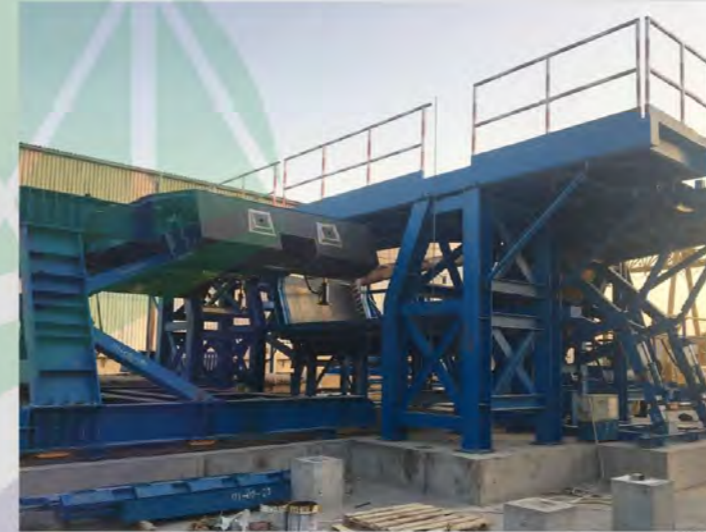
PRECAST SEGMENT MOULD

Precast Segment Mould refers to the whole span beam divided into different segments. After precasted in casting yard, it is transported to the site of the girder, which is pieced together by a special segment girder launcher to be assembled into span and completed span by span.

According to the length, type and quantity of the segment. The Hydraulic Precast Segment Mould is composed of side mould, inner mould, bottom mould, bottom mould trolley, fixed end mould, fixed end mould support frame, etc.

Short Line Method Precast Segment Mould

Hydraulic Precast Segment Mould for Shortline have the advantages of fast prefabrication speed, good apparent quality, small prefabrication site, no need to close traffic etc.



2

Long Line Method Precast Segment Mould

Longline Precast Segment Mould in the process of the actual beam prefabricated with advantages of full hydraulic operation, the precast speed is fast, the apparent quality is good, the prefabricated site is small, suitable for the continuous or other bridge structure, the installation without the closed traffic.





The Precast U Beam Formwork consists of the side mould, inner mould, bottom mould, support screw, span top, working platform, vibrator, ladder, block plate and so on.

The train can be surrounded by half, so that the train can run in the "U-shaped slot" and it is safer to run. The side wall of the beam is equipped with a sound absorbing panel to effectively absorb the noise from the train and reduce the impact of noise on the surrounding environment.

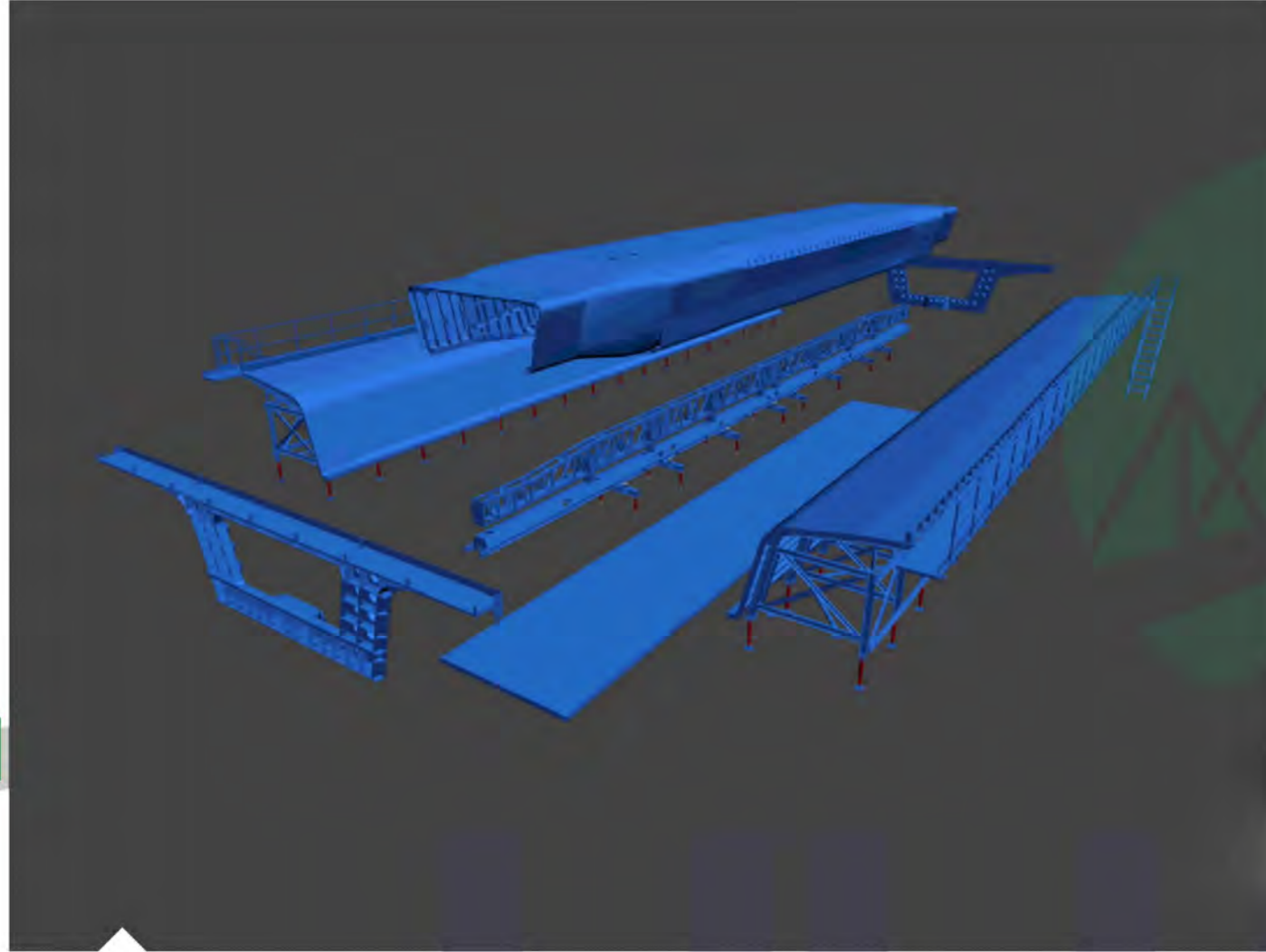
Force balance the overall design and internal model of the hydraulic folded, internal model hoisting system design is reasonable, the integral hoisting balance, reliable and convenient side mould stripping, side mould nodes set single block, bottom mould taper section before put piece of rotation, the end mould design is detachable easily.

U BEAM FORMWORK

With the rapid development of urban rail transit project, more and more U beams are used for viaduct lines. U beam as the most novel kind of urban rail transit adopted the viaduct bridge type with the advantages of light weight, good noise reduction, low building height, high space utilization, beautiful appearance, etc. So U Beam Formwork has been widely used.

U Beam Formwork adopts full hydraulic inner mould and advanced technology to make the precast U beam has the advantages of light weight, good noise reduction, low building height, high space utilization, beautiful appearance, etc.





Constructure and Features

The bottom formwork adopts concrete pedestal. The side formwork is composed of the transverse mode rib panel and the bracket, section length is divided according to partition span. The inner formwork is composed of transverse ribs, panels and supports.

Both side formwork and inner formwork adopt hydraulic control and closing technology to reduce the input of manual and mechanical equipment and reduce the cost of use.

FULL SPAN BOX GIRDER FORMWORK

Full Span Hydraulic Box Girder Formwork is composed of side formwork, bottom formwork, end formwork and inner formwork, which can meet the conversion between 32M and 24M beams.

Full Span Hydraulic Precast Box Girder formwork is used for various types of railway box beam prefabrication, lightweight and easy to assemble and disassemble, which can adjust the anti-camber smoothly.





Features

1. Free assembly, easily to subsequent installation and dismantle, high efficiency. In the mould production workshop, according to the total length of the mould, after processing the corresponding quantity of standard sections, first assemble in the mould of the production workshop, adjust the stitching between the sections, and then deliver the sections to the construction site after acceptance. After assembling the sections in the precast yard, weld the pieces together, and then polish the joint to form a whole. After the construction of the box girder, the installation and disassemble of T beam formwork can be completed in one time.

2. The difficult problem to control the appearance quality of the mould in the traditional T beam formwork is overcome.

The traditional mould are assembled with various standard sections, and the sections are pasted with double-sided tape to fill the joint between the plates, when the beam is prefabricated, it will inevitably form a vertical joint.

And after adopting the integral mould, because of the section of the block is the welding after grinding, there is no joint. Therefore, the subsequent precast girder web is a whole plane, and the appearance quality is greatly improved.

T BEAM FORMWORK

The T-beam and I-beam formwork is composed of side mould and end mould. The bottom mould is made of concrete. The side mould is composed of channel steel transverse rib, panel, I-steel support combination, section processing, side mould position fixed (end mould covers side mould) according to span and horizontal partition position. The end mould is made of steel rib and panel. The end mould, side mould and bottom mould are connected by bolt.





BOX CULVERT FORMWORK

Box culvert is widely in urban infrastructure construction. We can provide cast-in-situ comprehensive box culvert formwork and automatic precast box culvert formwork with advanced technology and high quality.

Cast-in-situ comprehensive box culvert formwork

The steel mould of cast-in-situ comprehensive box culvert formwork adopts the mould structure similar to the tunnel lining trolley, and the side mould of the straight line adopts the double side door frame to suspend the sliding mode, which greatly improves the construction quality and construction efficiency.

In particular, in the construction of straight line segment mould, there is a no-docking bar design which greatly improves the water quality of the main body and improves the construction efficiency.

Automatic precast box culvert formwork

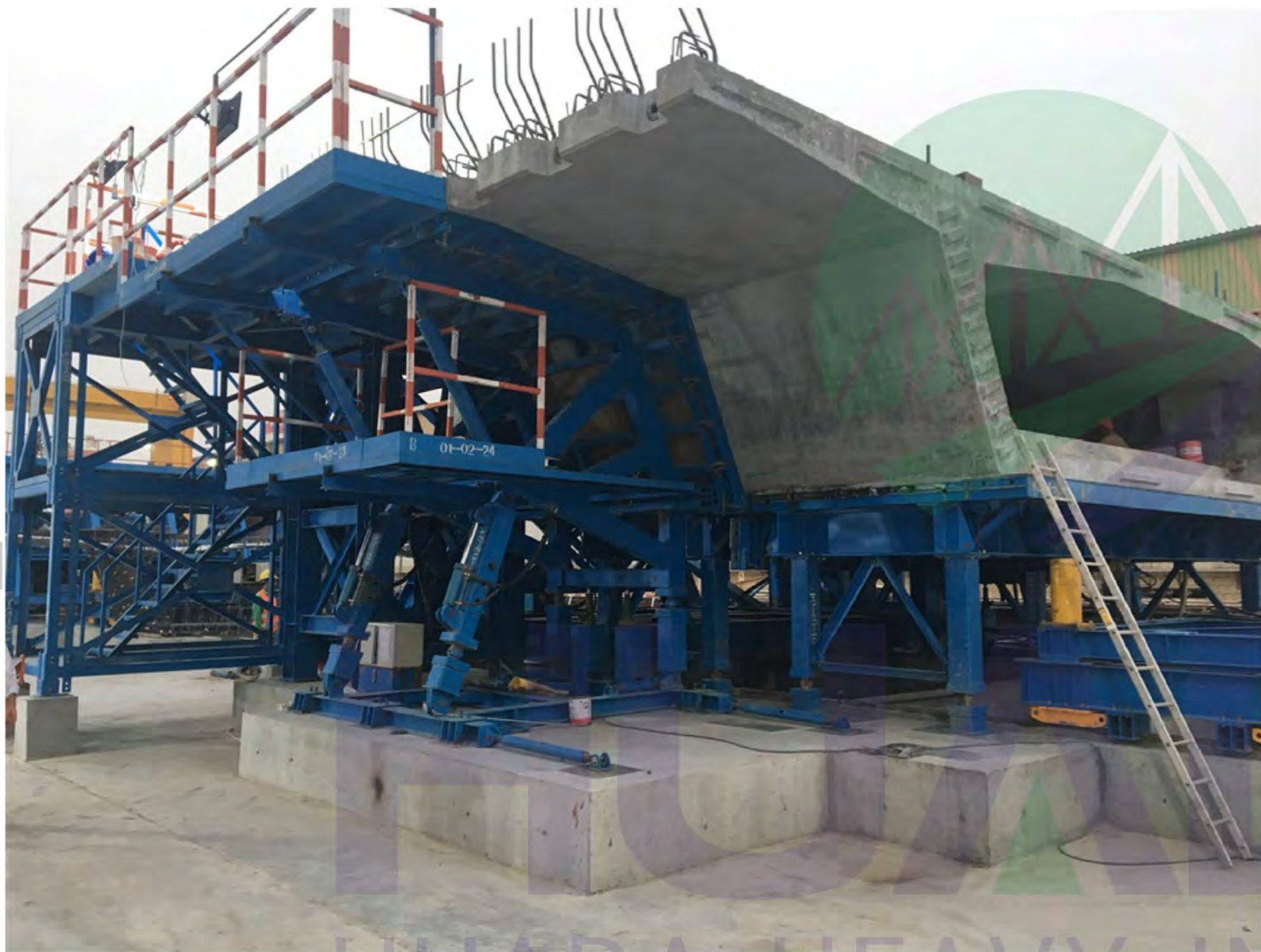
Pipeline prefabricated comprehensive box culvert formwork system is integrated a number of its own patent technology of the mould system, a set of side mould, a set of inner mould, several end mould and several bottom mould, fixed-point casting pipe, quick connectors, accurate positioning, full hydraulic pressure control, the inner mould and bottom mould self-drive trolley cooperate, the assembly line construction, it can realize within 24 hours complete a piece of construction.



Cast-in-situ Box Culvert Formwork



Automatic Precast Box Culvert Formwork



11

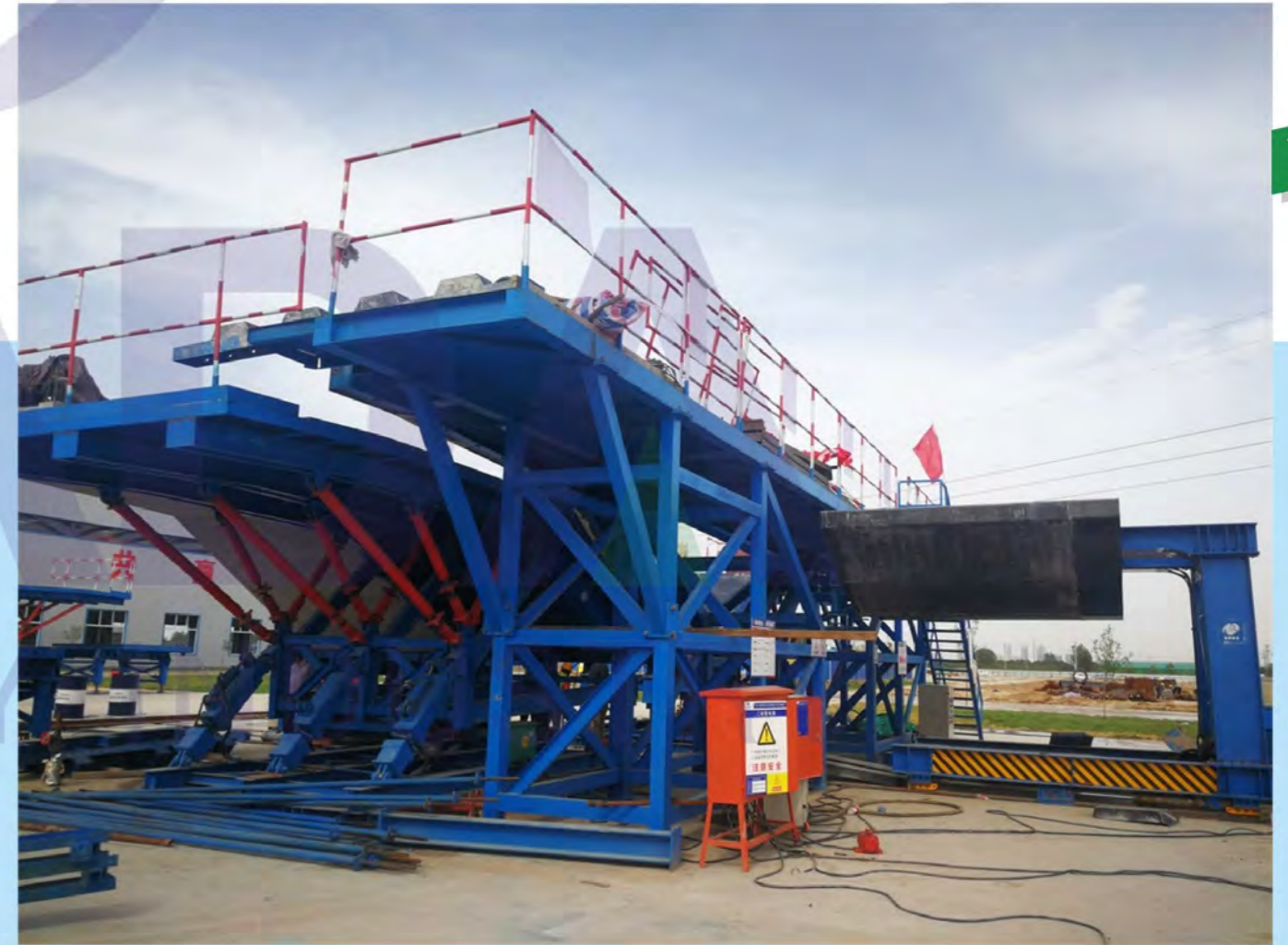
Short Line Method Precast Segment Mould Export to Kuwait



12

HUADA HEAVY INDUSTRY

Short Line Method Precast Segment Mould



13

14

**Short Line Method
Precast Segment Mould
China**

Short Line Method Precast Segment Mould

Short Line Method Precast Segment Mould China

15



16

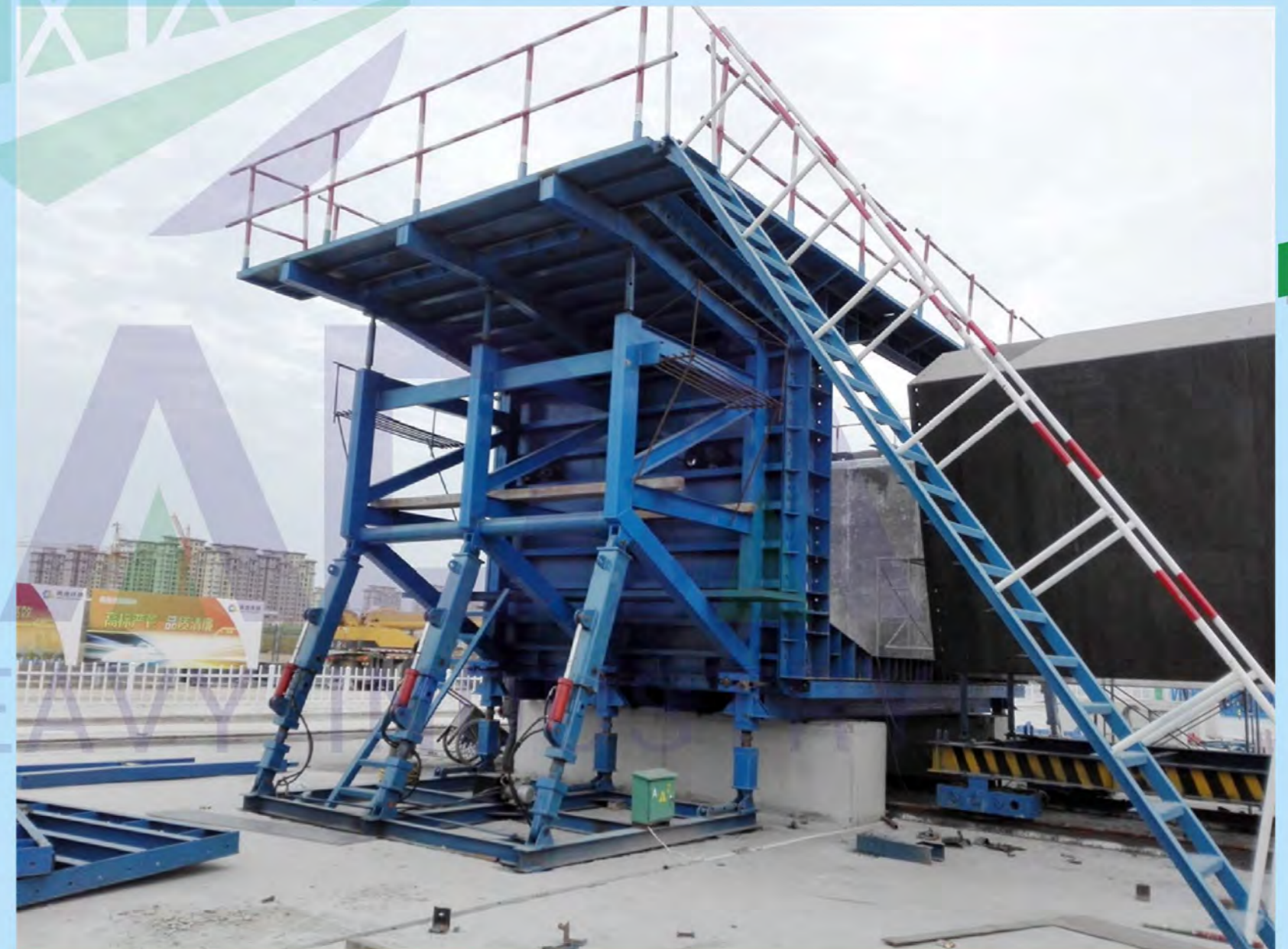


Short Line Method Precast Segment Mould



17

Short Line Method Precast Segment Mould China



18

HU
HUADA HEAVY

Short Line Method Precast Segment Mould



19

**Short Line Method
Precast Segment Mould
China**



20



Short Line Method Precast Segment Mould



21

22



**Long Line Method
Precast Segment Mould
China**

Long Line Method Precast Segment Mould

Long Line Method customized Precast Segment Mould Canada



23

24

Long Line Method Precast Segment Mould



25



26



Segmental mould installation, commissioning and precasting site

Long Line Method Precast Segment Mould

27



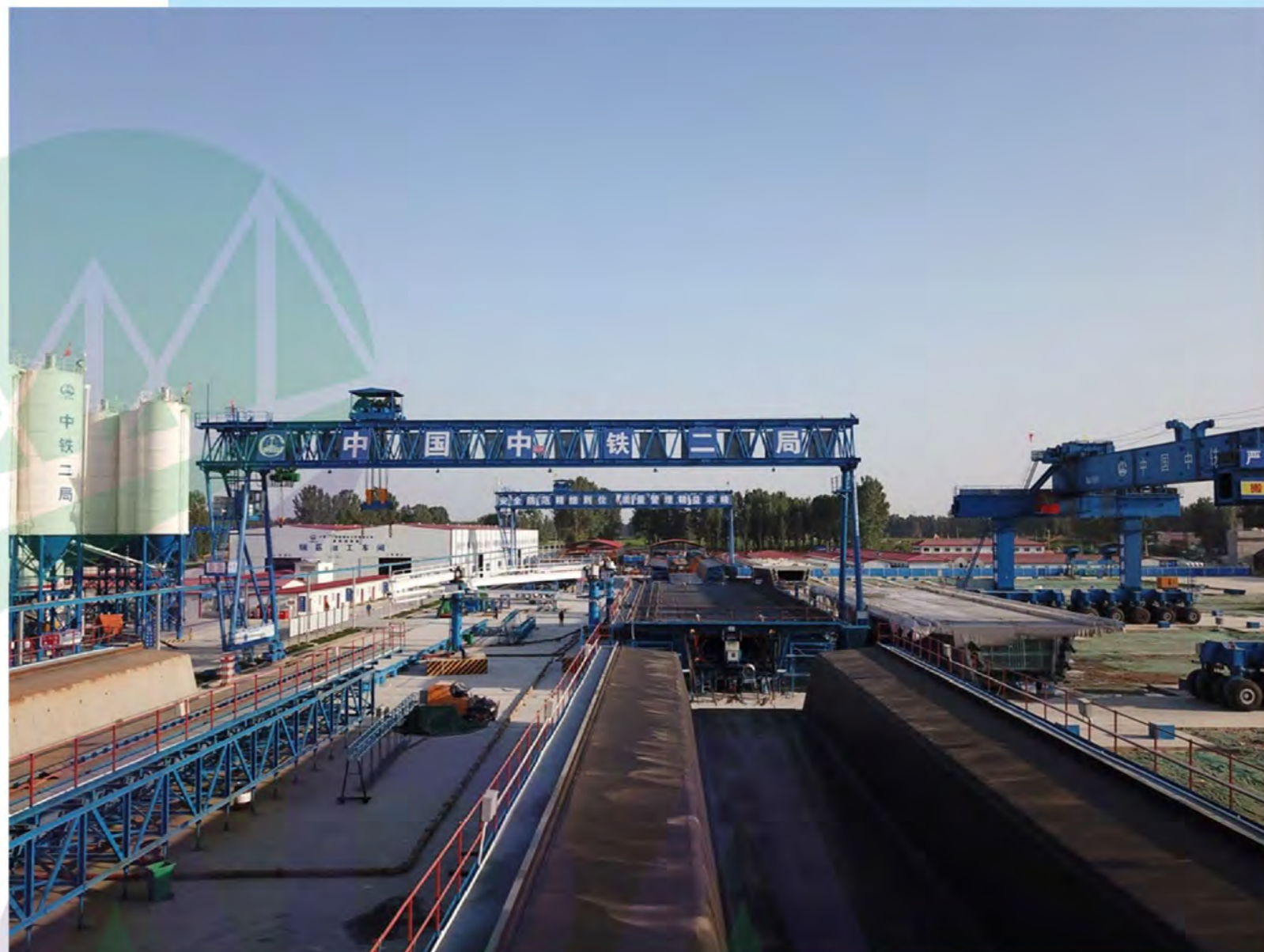
28

U Beam Formwork China

U Beam Formwork

Hydraulic Full Span Box Girder Formwork China

29



30

HEAVY INDUSTRY

Full Span Box Girder Formwork

T Beam Formwork China

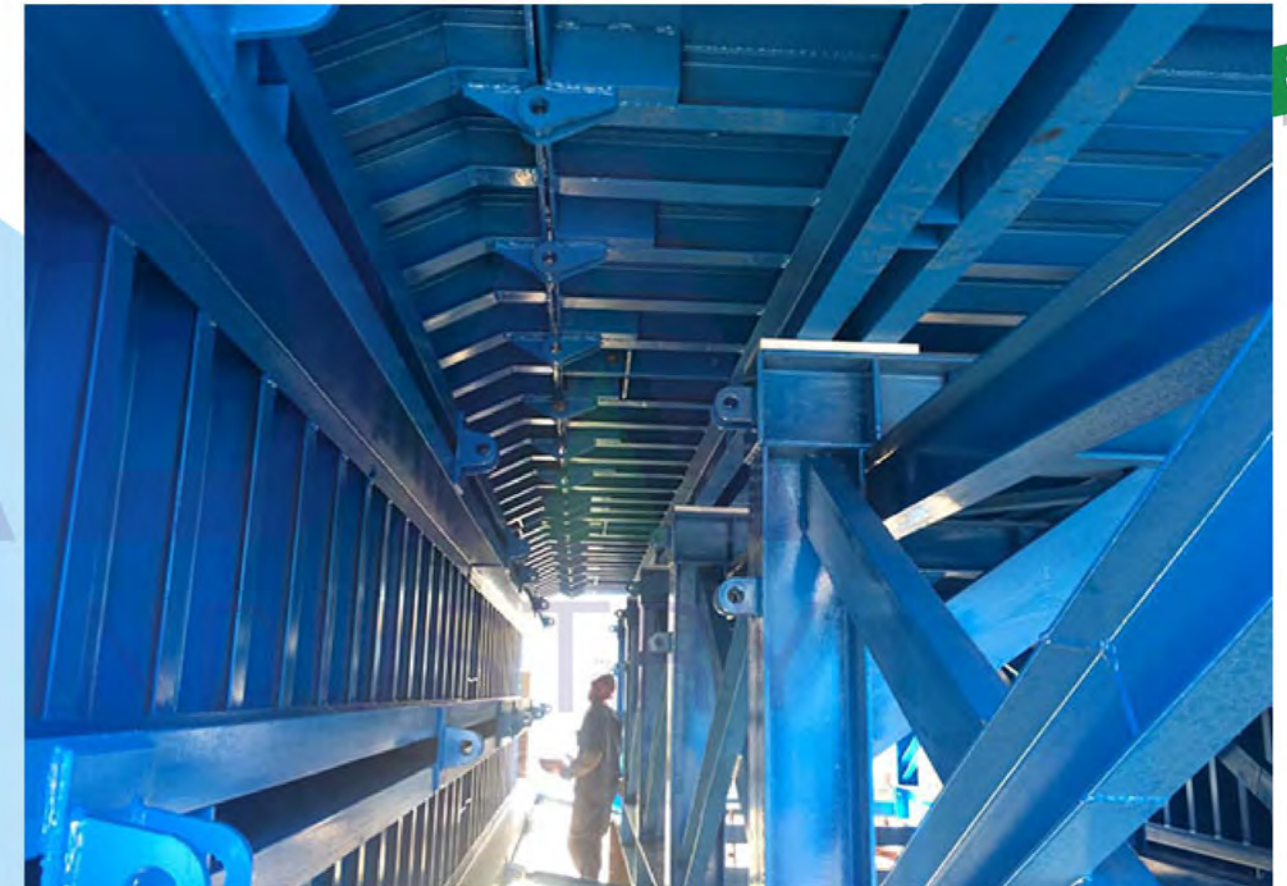


INDUSTRY



33

Cast-in-situ Comprehensive Box Culvert Formwork China



34

HUADA HEAVY

Cast-in-situ Comprehensive Box Culvert Formwork



35

4*3.5M Automatic Precast Box Culvert Formwork China



36

Automatic Precast Box Culvert Formwork